

NETUKULIMK ELEMENT CARDS



PEJU



PUKUNMAWEL



PKWIMANN



KOPĪTEJ



TUPSI



MTE'SKM



KATEW



ATOQWA'SU



SU'N

BLUEBERRIES

IT EATS:

GETS EATEN BY:

OTHER FACTS:

QUAHOG

IT EATS:

GETS EATEN BY:

OTHER FACTS:

COD

IT EATS:

GETS EATEN BY:

OTHER FACTS:

SNAKE

IT EATS:

GETS EATEN BY:

OTHER FACTS:

ALDER

IT EATS:

GETS EATEN BY:

OTHER FACTS:

SOW BUG

IT EATS:

GETS EATEN BY:

OTHER FACTS:

CRANBERRIES

IT EATS:

GETS EATEN BY:

OTHER FACTS:

TROUT

IT EATS:

GETS EATEN BY:

OTHER FACTS:

EEL

IT EATS:

GETS EATEN BY:

OTHER FACTS:



KITPU



MIMIKEJ



KU'KU'KWES



TAQTA'LOQ



JJAWE'J



MUIN



KOPIT



APLI'KMUJ



SQOLJ

OWL

IT EATS:

GETS EATEN BY:

OTHER FACTS:

BUTTERFLY

IT EATS:

GETS EATEN BY:

OTHER FACTS:

EAGLE

IT EATS:

GETS EATEN BY:

OTHER FACTS:

BEAR

IT EATS:

GETS EATEN BY:

OTHER FACTS:

CRICKET

IT EATS:

GETS EATEN BY:

OTHER FACTS:

SALAMANDER

IT EATS:

GETS EATEN BY:

OTHER FACTS:

FROG

IT EATS:

GETS EATEN BY:

OTHER FACTS:

RABBIT

IT EATS:

GETS EATEN BY:

OTHER FACTS:

BEAVER

IT EATS:

GETS EATEN BY:

OTHER FACTS:



JAKEJ



PUTUP



TI'AM



SU'ITE'L



MATUES



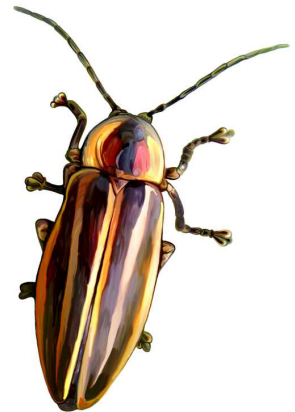
MASKWI



PLAWEJUIMANAQSI



PLAMU



WASOQETESINKTEW

MOOSE

IT EATS:

GETS EATEN BY:

OTHER FACTS:

WHALE

IT EATS:

GETS EATEN BY:

OTHER FACTS:

LOBSTER

IT EATS:

GETS EATEN BY:

OTHER FACTS:

BIRCH

IT EATS:

GETS EATEN BY:

OTHER FACTS:

PORCUPINE

IT EATS:

GETS EATEN BY:

OTHER FACTS:

SWEETGRASS

IT EATS:

GETS EATEN BY:

OTHER FACTS:

FIREFLY

IT EATS:

GETS EATEN BY:

OTHER FACTS:

SALMON

IT EATS:

GETS EATEN BY:

OTHER FACTS:

PARTRIDGE BERRIES

IT EATS:

GETS EATEN BY:

OTHER FACTS:



WETI



E'S



SᑭPEKN



JIPJAW EJ



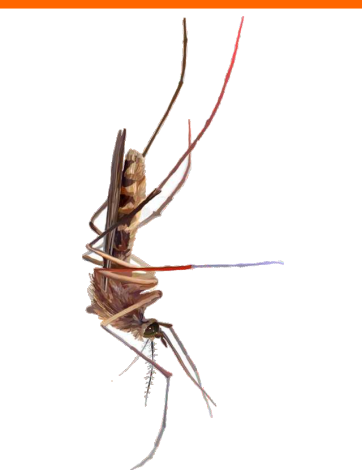
TITIES



PLAWEJ



AMU



KLMUE'J



SAMQWAN

GROUND POTATO

IT EATS:

GETS EATEN BY:

OTHER FACTS:

CLAMS

IT EATS:

GETS EATEN BY:

OTHER FACTS:

WORM

IT EATS:

GETS EATEN BY:

OTHER FACTS:

PARTRIDGE

IT EATS:

GETS EATEN BY:

OTHER FACTS:

BLUE JAY

IT EATS:

GETS EATEN BY:

OTHER FACTS:

ROBIN

IT EATS:

GETS EATEN BY:

OTHER FACTS:

WATER

IT EATS:

GETS EATEN BY:

OTHER FACTS:

MOSQUITO

IT EATS:

GETS EATEN BY:

OTHER FACTS:

BEE

IT EATS:

GETS EATEN BY:

OTHER FACTS:



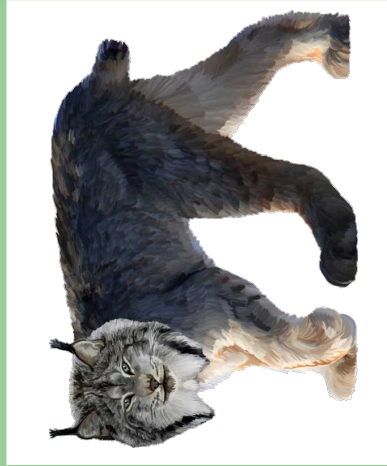
SAPTKMK



MNTMU



ALANJ



APUKSKN



LPA'TUJ



MIKJIKJ



NA'JIPUKTAQNEJ



KU'KU'KWESJI'J



L'KETU

HERRING

IT EATS:

GETS EATEN BY:

OTHER FACTS:

OYSTER

IT EATS:

GETS EATEN BY:

OTHER FACTS:

DIRT

IT EATS:

GETS EATEN BY:

OTHER FACTS:

TURTLE

IT EATS:

GETS EATEN BY:

OTHER FACTS:

YOUNG BOY

IT EATS:

GETS EATEN BY:

OTHER FACTS:

LYNX

IT EATS:

GETS EATEN BY:

OTHER FACTS:

MUSHROOM

IT EATS:

GETS EATEN BY:

OTHER FACTS:

MOTH

IT EATS:

GETS EATEN BY:

OTHER FACTS:

BAT

IT EATS:

GETS EATEN BY:

OTHER FACTS: